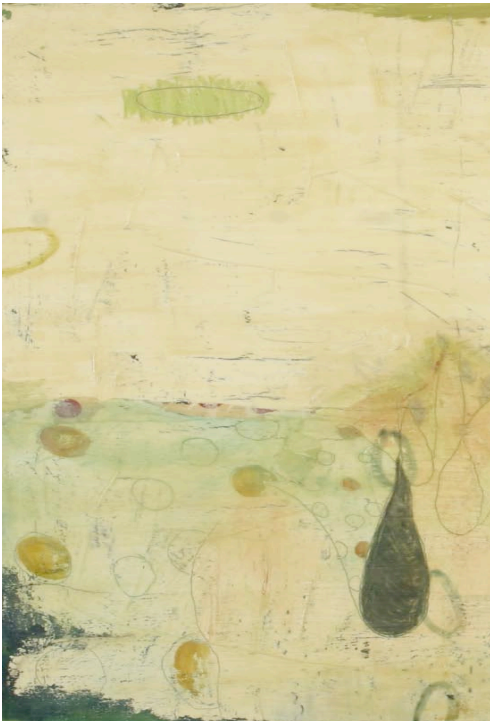


Conrad
Wilde
Gallery

Falling Out of Line

Contact: Miles Conrad 520-622-8997 or conradwilde@hotmail.com



Conrad Wilde Gallery is pleased to present our January exhibition, ***Falling Out of Line: Molly Geissman and Elee Oak***. The exhibition opens with a reception Saturday, January 5th from 6-9 pm and runs through Saturday, January 26th. Conrad Wilde Gallery is located at 210 North Fourth Avenue in the heart of Tucson's downtown arts district.

Falling Out of Line includes the work of ***Molly Geissman*** and ***Elee Oak***. Both artists work in an intuitive fashion utilizing a combination of drawing and painting techniques in Mixed Media.

Molly Geissman creates layered images that are organic and imperfect in nature. Her abstract works revolve around organic circulars and are tied together compositionally with color and chaos. Geissman works spontaneously with energy and passion and is fascinated by "line and marks made by the soul of the hand" (artist statement).

Elee Oak is heavily influenced by the drawings she made as a child. In her work she combines academic training with those early impulses to pay tribute to her younger self. Oak pays special attention to the line quality and storytelling process of her childhood drawings, in this way she reconnects with the innocence and uninhibited awareness of a child.

Conrad Wilde Gallery features contemporary painting, sculpture and works on paper emphasizing abstraction and innovation from emerging and established artists based locally and nationally. Gallery hours are Tuesday through Saturday from 11:00 a.m. to 6:00 p.m. and by appointment by calling 520-622-8997. Visit www.conradwildegallery.com for more information.

