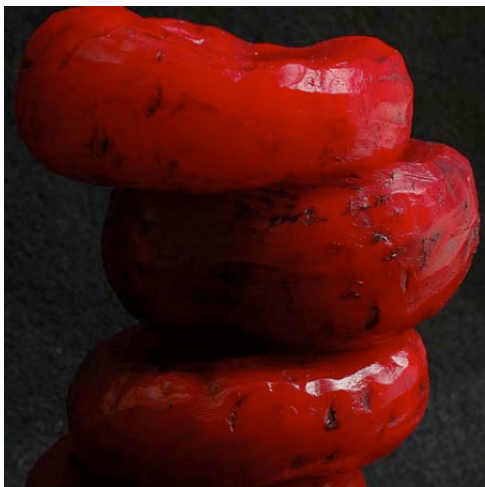


Compelling Matter

Contact: Miles Conrad 520-622-8997 or conradwilde@hotmail.com



Jessica Drenk



Lois Epperson-Gale



Jessica Drenk

Conrad Wilde Gallery welcomes Tucson artists Jessica Drenk and Lois Epperson-Gale in **Compelling Matter**, an exhibition of mixed-media sculpture exploring nature and form. **Compelling Matter** opens with a reception Sat., May 3rd from 6 to 9 pm, and runs through Sat., May 31st. Conrad Wilde Gallery is located at 210 N. 4th Ave., in the heart of Tucson's downtown arts district.

Both Drenk and Epperson-Gale investigate cellular structure. Epperson-Gale's tactile work tends toward the visceral—or even viscera—like enlarged cells or ghostly medical diagrams. She writes, "My interest lies in nature and, in particular, the complexities, structures, and functions of the human body."

Similarly, Jessica Drenk builds organisms. She works to find life in otherwise mundane objects—and creates a cellular colony from PVC pipes or toilet paper rolls. While Epperson-Gale's art oozes with life, Drenk's careful constructions show organization as the basis for our world.

Also on view in the Gallery is Drenk's installation *Membrina Various*. Though massive—the work occupies 8x14 feet—*Membrina Various* feels delicate and airy, as white flowerlike structures bloom from the wall. Composed entirely of coffee filters, this sculpture highlights Drenk's consistently clever use of material and negative space.

Drenk and Epperson-Gale will give an **Artists' Talk** on **Sat., May 10th from 4:30 to 5:30 pm**. This informal session will feature a tour of the Gallery led by the artists, with time for questions and answers.

Conrad Wilde Gallery features contemporary painting, sculpture and works on paper from established and emerging artists based locally and nationally. Gallery hours are Tuesday through Saturday from 11 am to 6 pm and by appointment by calling 520-622-8997. Please visit www.conradwildegallery.com for more information.