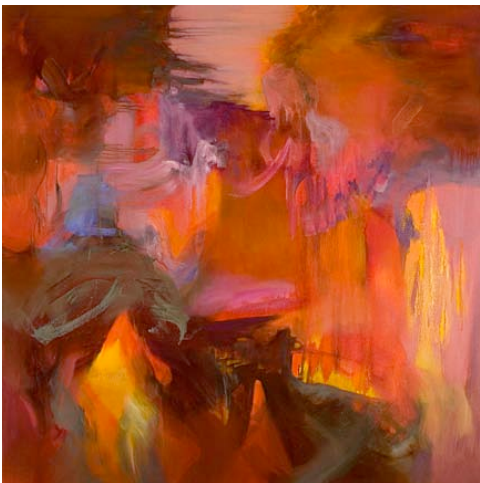


Lyrical Abstraction

Contact: Miles Conrad 520-622-8997 or conradwilde@hotmail.com



Conrad Wilde Gallery welcomes celebrated Tucson artist Emilia Arana for her solo exhibition of new paintings, ***Lyrical Abstraction***. The exhibition will run from April 5th through April 26th, with an artist's reception Saturday, April 12th, from 6 to 9 pm. Conrad Wilde Gallery is located at 210 N. 4th Ave., in the heart of Tucson's downtown arts district.

Arana's paintings sing with rich color and quiet energy; her fluid style reflects her musical background. Trained as a classical pianist, Arana cites music as an important inspiration. As she created the paintings in ***Lyrical Abstraction***, Buddhist chants, contemporary literature and poetry also informed her work.

But Arana prefers not to pin down influences in her art. "How those inspirations translate to something tangible on a painting surface is a great mystery," she says, "but not one that I want to dissect." Instead, she thoughtfully embraces the abstract, organic nature of her painting.

"For me," she says, "it makes more sense to just live side by side with that unknown." Arana's paintings share the same sense of ambiguity, with their shifting colors and expressive brushstrokes. Arana's abstraction—of image and of her artistic process—allows her work to make its own music.

Conrad Wilde Gallery features contemporary painting, sculpture and works on paper from established and emerging artists based locally and nationally. Gallery hours are Tuesday through Saturday from 11 am to 6 pm and by appointment by calling 520-622-8997. Please visit www.conradwildegallery.com for more information.