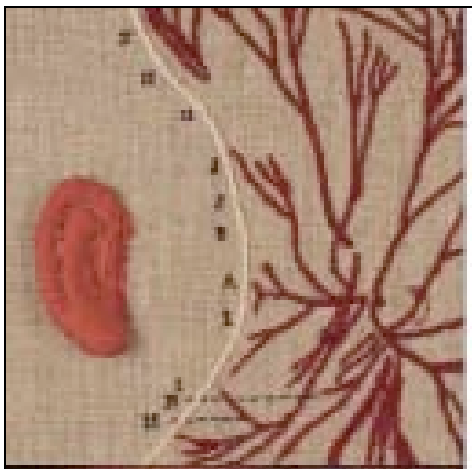
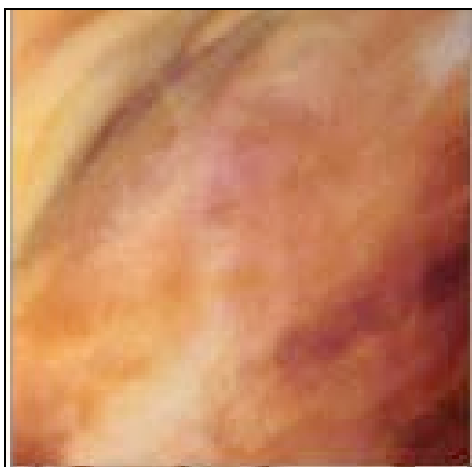
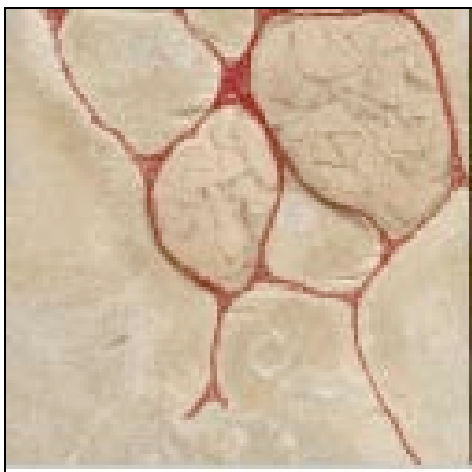


Conrad
Wilde
Gallery

Corporealities: *Bodies in Question*



Conrad Wilde Gallery is pleased to announce *Corporealities: Bodies in Question* with guest curator, Lois Epperson-Gale. The show opens Saturday, January 2nd with a reception from 6 p.m. to 9 p.m. This event serves as the Grand Opening of our new location in the Historic Firestone Warehouse at 439 N. 6th Avenue # 171 in the heart of Tucson's downtown arts district.

Corporealities: Bodies in Question examines the enduring subject of the human form with the work of ten contemporary artists from across the US and Canada. Sometimes fractured and redolent yet altogether beautiful and haunting, these works subvert classical notions of the body using materials and processes both traditional and innovative.

Featured Artists Include:

Jennifer Anderson
Kelly Jo Ashbury
Kira Campbell
Megan Canning
Lois Epperson-Gale
Heidi Maddess
Victoria May
Mireille Vautier
Sande Waters
John Zimmerman

Conrad Wilde Gallery features contemporary painting, sculpture, and works on paper from emerging and established artists based locally and nationally. Gallery hours are Tuesday through Saturday 11 a.m. to 5 p.m. and by appointment by calling 520.622.8997. Visit www.conradwildegallery.com for information.